

HUW DAVIES GALLERY

19th November – 29th November 2015

The Death's Maiden

Ellen Hewitt



The Death's Maiden 3 and 4 2015, mixed media (inkjet prints on washi paper, layered with lightbox), 42cm x 59.4cm

Artist statement | Ellen Hewitt

Humanity's attempts to understand death and existence have generated a rich accumulation of abstract, creative thought. These thoughts are often imbued with erotica, religion, irony and endless visual references, making the alluring existence of 'the death's maiden'- a familiar folkloric symbol of death- purely determined by the collective imagination of humanity.

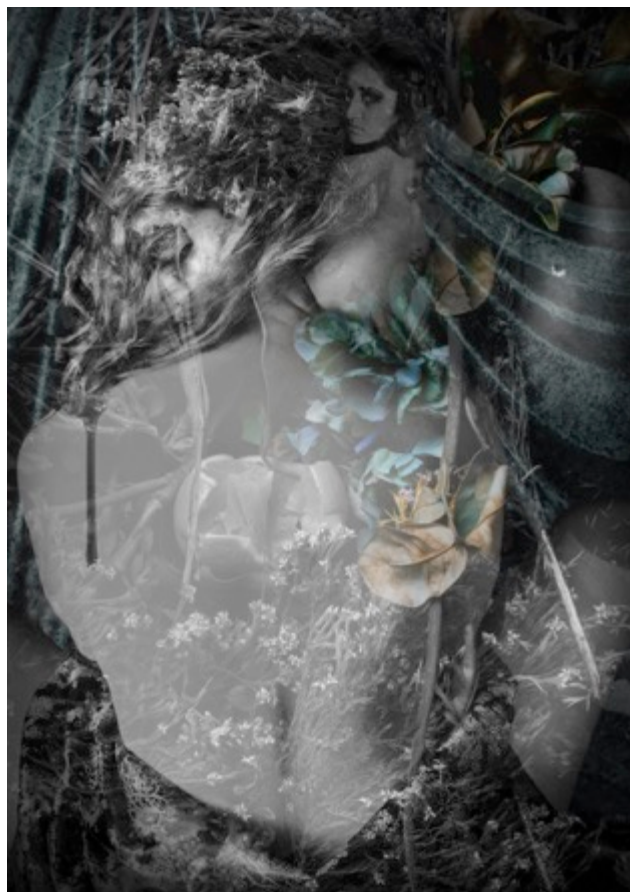
The Death's Maiden is an ethereal body of work that explores humanity's relationship with mortality. The exhibition ultimately demonstrates that what lies after death is only a manifestation of the collective introspections, speculations and thoughts of humankind.

About the artist

Ellen Hewitt is an emerging Canberra-based artist, working predominantly within the field of photography. Her work is incredibly diverse, although as her practice has matured she has tended to work in multimedia formats, often with a deliberately hands on, handmade sensibility. Ellen's practice seeks to explore humanity's unconscious relationships with the fundamental and intangible facts of life, such as existence, mortality and death. She has exhibited in the group exhibition *Life//Death* (Photomedia space, ANU School of Art, 2014), and the National Museum of Australia. This is her first solo exhibition.

About the Australian National University School of Art Emerging Artist Support Scheme PhotoAccess Awards

Ellen Hewitt graduated from the Australian National University School of Art (ANU SoA) Photography and Media Arts Workshop in 2014, and was awarded a one-year residency at PhotoAccess for her graduating work. Each year PhotoAccess selects graduates from the ANU SoA for Emerging Artist Support Scheme (EASS) Awards. The intention is to assist those photographers, in the emerging stage of their careers and with limited exhibition experience, to develop and present new work in Huw Davies Gallery exhibitions.



The Death's Maiden 2 and 1 2015, mixed media (inkjet prints on washi paper, layered with lightbox), 42cm x 59.4cm

List of works

	Price
1. <i>The Death's Maiden 1</i> 2015, mixed media (inkjet prints on washi paper, layered with lightbox), 42cm x 59.4cm	\$400
2. <i>The Death's Maiden 2</i> 2015, mixed media (inkjet prints on washi paper, layered with lightbox), 42cm x 59.4cm	\$400
3. <i>The Death's Maiden 3</i> 2015, mixed media (inkjet prints on washi paper, layered with lightbox), 42cm x 59.4cm	\$400
4. <i>The Death's Maiden 4</i> 2015, mixed media (inkjet prints on washi paper, layered with lightbox), 42cm x 59.4cm	\$400
5. <i>The Death's Maiden 5</i> 2015, mixed media (inkjet prints on washi paper, layered with lightbox), 42cm x 59.4cm	\$400

Public Program | Artists In Conversation

Ellen Hewitt, Rebecca Worth and Kon Kudo discuss their practices in photography and installation art.

Thursday 19 November 2015, 5pm @ PhotoAccess